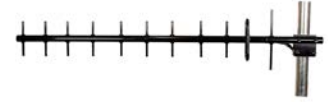


880 MHz to 960 MHz Yagi Antenna, 13 dBi, 36in LMR400 pigtail coax with Type N Female Connector, Adjustable Polarization Pro-Series

KP-960SPY13



Features

- Aircraft Quality 6061-T6 Aluminum with 5/16" Elements with 360° Fully Welded to a 1" Boom
- Powder-Coated Balck for Corrosion, Fade, and Ice-Build Up Resistance
- Can be Installed for Either Vertical or Horizontal Polarization
- Comes with 36" LMR400 Pigtails with N-Type Female Connectors

Applications

- 900 MHz Cellular and GSM
- 900 MHz ISM Band & Wireless LAN Systems
- Point to Multipoint & Non Line of Sight
- NLOS Applications
- RFID & SCADA
- LPWAN, LoRA, IoT, M2M

Description

The KP Performance KP-960SPY13 880 MHz to 960 MHz Yagi Antenna is designed for the most rugged conditions and ships the same day. Equipped with an N-Female connector on a 36 in LMR400 pigtail, coaxial connections to a radio are simple and easy. This 900 MHz antenna provides 13 dBi of gain and adjustable polarization. The KP-960SPY13 is ideally suited for 900 MHz ISM bands. This 13 dBi antenna supports Land Mobile Radio for land transportation, utility, manufacturing, and petrochemical companies (oil and gas).

Measuring 43 inches long, the N-female KP-960SPY13 from KP Performance is manufactured using robust 5/16" aircraft quality aluminum elements. The KP-960SPY13 elements are completely welded to a 1" boom and painted black. This ensures performance and survivability in the toughest environments.

KP-960SPY13 Yagi Antenna from KP Performance operating from 880 MHz to 960 MHz can cover all your needs for Land Mobile Radio and Utilities communications.

KP Performance 13 dBi 900 MHz 43 inch Yagi antennas are high-quality components backed by expert technical support and sales personnel. The KP-960SPY13 is in stock and ready to ship the same day.

Configuration

Design	Yagi
Band Type	Dual
Radiation Pattern	Directional
Polarization	Linear
Cable Type	LMR400
Cable Length	36 in [914.4 mm]
Connector Type	N Female
Number of Ports	1
Housing Material and Plating	Aluminum, Powder Coat

Electrical Specifications

Description	Minimum	Typical	Maximum	Units
Frequency Range	880		960	MHz
Input VSWR		1.3:1	1.5:1	
Impedance		50		Ohms
Gain		13		dBi

Click the following link (or enter part number in "SEARCH" on website) to obtain additional part information including price, inventory and certifications: [880 MHz to 960 MHz Yagi Antenna, 13 dBi, 36in LMR400 pigtail coax with Type N Female Connector, Adjustable Polarization Pro-Series KP-960SPY13](#)

880 MHz to 960 MHz Yagi Antenna, 13 dBi, 36in
LMR400 pigtail coax with Type N Female Connector,
Adjustable Polarization Pro-Series



KP-960SPY13

Input Power 150 Watts

Specifications by Band

Description	Band 1	Band 2	Band 3	Band 4	Band 5	Units
Range	880-928	928-960				MHz
Gain	12.5	13				dBi
Horizontal HPBW	42	40				Degrees
Vertical HPBW	38	35				Degrees
Front to Back Ratio	17	17				dB
VSWR Max	1.5:1	1.5:1				

Mechanical Specifications

Housing Material	Aluminum
Housing Plating/Color	Powder Coat
Size	
Length	43 in [109.22 cm]
Width	8.3 in [210.82 mm]
Height	2.4 in [60.96 mm]
Mounting Mast Diameter	0.75 to 2 in [19.05 to 50.80 mm]
Weight	8 lbs [3.63 kg]

Environmental Specifications

Temperature	
Operating Range	-40 to +60 deg C
Storage Range	-40 to +140 deg C
Wind Survivability	200 MPH [321.87 KPH]

Compliance Certifications (see [product page](#) for current document)

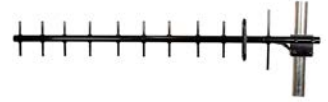
Plotted and Other Data

Notes:

Click the following link (or enter part number in "SEARCH" on website) to obtain additional part information including price, inventory and certifications:
[880 MHz to 960 MHz Yagi Antenna, 13 dBi, 36in LMR400 pigtail coax with Type N Female Connector, Adjustable Polarization Pro-Series KP-960SPY13](#)

880 MHz to 960 MHz Yagi Antenna, 13 dBi, 36in
LMR400 pigtail coax with Type N Female Connector,
Adjustable Polarization Pro-Series

KP-960SPY13



Appendix

Electrical Downtilt: Angle in the antenna's elevation pattern in which the maximum gain occurs.

Gain: Antenna's average gain.

Front to Back Ratio @ 180°±30°: Average difference between the antenna's maximum gain and the maximum gain in the antenna's back lobe over ±30° angles.

Cross-polarization Ratio (dB): Typical difference between the co-polarization and cross-polarization gain across the sector's 3 dB Beam Width.

Dedicated to serving the needs of the Wireless Internet Service Provider (WISP) market, KP Performance Antennas offers purpose built products that reliably perform in the field. KP Performance Antennas product line consists of Yagi, Grid, Omni, Dish and other style antennas that operate in the 900 MHz, 2.4 GHz, 3 GHz, and 5 GHz frequencies.

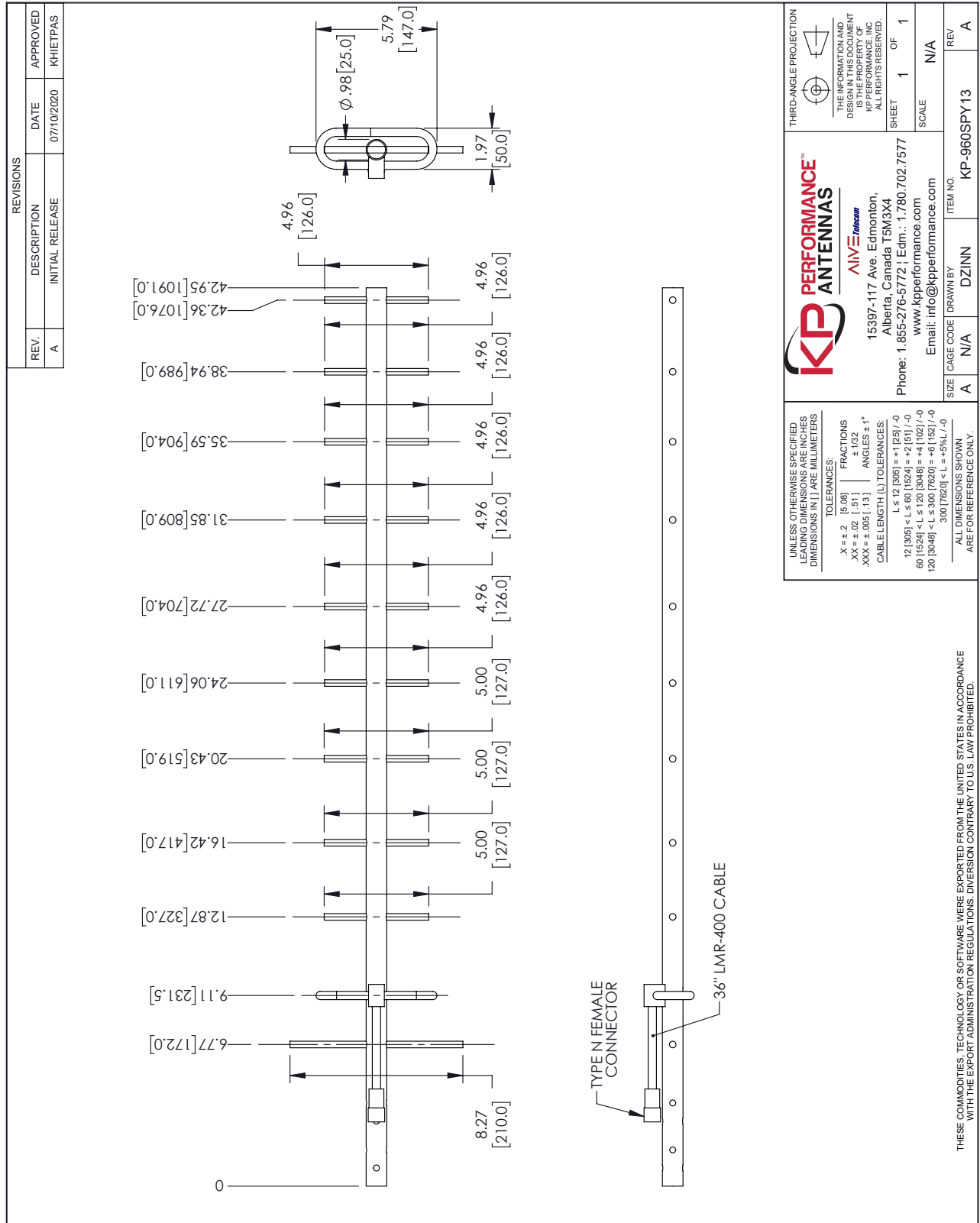
Click the following link (or enter part number in "SEARCH" on website) to obtain additional part information including price, inventory and certifications: [880 MHz to 960 MHz Yagi Antenna, 13 dBi, 36in LMR400 pigtail coax with Type N Female Connector, Adjustable Polarization Pro-Series KP-960SPY13](https://www.kpperformance.com/880mhz-960mhz-13-dbi-36-in-lmr400-pigtail-coax-adjustable-pol-yagi-antenna-kp-960spy13-p.aspx)

URL: <https://www.kpperformance.com/880mhz-960mhz-13-dbi-36-in-lmr400-pigtail-coax-adjustable-pol-yagi-antenna-kp-960spy13-p.aspx>

The information contained within this document is accurate to the best of our knowledge and representative of the part described herein. It may be necessary to make modifications to the part and/or the documentation of the part in order to implement improvements. KP Performance reserves the right to make such changes as required. Unless otherwise stated, all specifications are nominal. KP Performance does not make any representation or warranty regarding the suitability of the part described herein for any particular purpose, and KP Performance does not assume liability arising out of the use of any part or document.

880 MHz to 960 MHz Yagi Antenna, 13 dBi, 36in LMR400 pigtail coax with Type N Female Connector, Adjustable Polarization Pro-Series

KP-960SPY13 CAD Drawing



ALIVE Telecom
 15397-117 Ave. Edmonton,
 Alberta, Canada T5M3X4
 Phone: 1-855-276-5772 | Edm.: 1-780-702-7577
 www.kpperformance.com
 Email: info@kpperformance.com

THIRD-ANGLE PROJECTION

THE INFORMATION AND DIMENSIONS SHOWN HEREIN ARE THE PROPERTY OF KP PERFORMANCE, INC. ALL RIGHTS RESERVED.

SHEET 1 OF 1

SCALE N/A

ITEM NO. KP-960SPY13

REV A

SIZE A

CAGE CODE N/A

DRAWN BY DZINN

SCALE N/A

REV A