

615 MHz-960 MHz, 1710 MHz-2700 MHz,  
3300 MHz-7100 MHz 4G 5G WiFi 6e Rubber Duck,  
Terminal Antenna 4 dBi SMA Male Connector

**KP-600SPRD-4-SM**



**Features**

- 0 to 4 dBi Gain
- Tilt and Swivel Design
- SMA Male Connector
- Blade Design

**Applications**

- Infotainment Systems, Routers, WiFi Hotspots, HD Video Transmission, Gateways, Dash Cameras, Public Transportation
- WiFi 6e (802.11ax)
- Connected Cars or Self-Driving Cars, Fleet Management, Logistics
- 4G & 5G Networks
- 600, 700, 800, 850, 900, 1800, 1900, 2100, 2600, 3500, 5800 MHz, 6 GHz and 7 GHz Bands
- IoT, Cellular, Zigbee, Z-Wave, Bluetooth, CBRS, WiFi, C-Band, UNII

**Description**

The KP Performance KP-600SPRD-4-SM 5G Rubber Duck Antenna operates from 615 MHz to 7125 MHz with high performance omnidirectional patterns and is available to ship same day. The KP-600SPRD-4-SM is ideally suited 4G, 5G, LTE, CBRS, UNII-1 and WiFi 6e bands. It features a tilt-and-swivel SMA-Plug (male) connector, allowing the KP-600SPRD-4-SM to be used vertically, at a right angle, or any angle in-between.

The high performance rubber-duck KP-600SPRD-4-SM from KP Performance is a flexible antenna providing broad coverage and 1-4 dBi gain. This SMA male rubber duck is suitable for commercial radios in public and private 5G and Cellular networks that are equipped with SMA female connectors. KP's KP-600SPRD-4-SM supports 600, 700, 800, 850, 900, 1800, 2100, 2400, 2600, 3500, 5800 MHz and 7 GHz bands.

This 5G 615 MHz to 7125 MHz rubber duck antenna with a SMA male connector, as well as our wide selection of superior quality antennas, ships same day. Contact our knowledgeable and friendly KP Performance technical support and sales staff for your answers on our antennas.

**Configuration**

Design	Portable
Band Type	Multi
Radiation Pattern	Omni Directional
Wavelength	1/2
Polarization	Vertical
Connector Type	SMA Male

**Electrical Specifications**

Description	Minimum	Typical	Maximum	Units
Frequency Range	615		7150	MHz
Input VSWR			3:1	
Impedance		50		Ohms
Gain		3.5		dBi
Gain	0			dBi

Click the following link (or enter part number in "SEARCH" on website) to obtain additional part information including price, inventory and certifications:  
[615 MHz-960 MHz, 1710 MHz-2700 MHz, 3300 MHz-7100 MHz 4G 5G WiFi 6e Rubber Duck, Terminal Antenna 4 dBi SMA Male Connector KP-](#)

615 MHz-960 MHz, 1710 MHz-2700 MHz,  
 3300 MHz-7100 MHz 4G 5G WiFi 6e Rubber Duck,  
 Terminal Antenna 4 dBi SMA Male Connector

**KP-600SPRD-4-SM**



**Specifications by Band**

Description	Band 1	Band 2	Band 3	Band 4	Band 5	Units
Range	615-960	1,710-2,700	3,300-4,200	5,150-7,150		MHz
Gain	1	2	5	3.5		dBi

**Mechanical Specifications**

Radome Material	ABS
<b>Size</b>	
Length	7.14 in [181.36 mm]

**Environmental Specifications**

<b>Temperature</b>	
Operating Range	-20 to +65 deg C
Storage Range	-20 to +65 deg C

**Compliance Certifications** (see [product page](#) for current document)

**Plotted and Other Data**

Notes:

Click the following link (or enter part number in "SEARCH" on website) to obtain additional part information including price, inventory and certifications:  
[615 MHz-960 MHz, 1710 MHz-2700 MHz, 3300 MHz-7100 MHz 4G 5G WiFi 6e Rubber Duck, Terminal Antenna 4 dBi SMA Male Connector KP-](#)

615 MHz-960 MHz, 1710 MHz-2700 MHz,  
3300 MHz-7100 MHz 4G 5G WiFi 6e Rubber Duck,  
Terminal Antenna 4 dBi SMA Male Connector

**KP-600SPRD-4-SM**



---

**Appendix**

**Electrical Downtilt:** Angle in the antenna's elevation pattern in which the maximum gain occurs.

**Gain:** Antenna's average gain.

**Front to Back Ratio @ 180°±30°:** Average difference between the antenna's maximum gain and the maximum gain in the antenna's back lobe over ±30° angles.

**Cross-polarization Ratio (dB):** Typical difference between the co-polarization and cross-polarization gain across the sector's 3 dB Beam Width.

Dedicated to serving the needs of the Wireless Internet Service Provider (WISP) market, KP Performance Antennas offers purpose built products that reliably perform in the field. KP Performance Antennas product line consists of Yagi, Grid, Omni, Dish and other style antennas that operate in the 900 MHz, 2.4 GHz, 3 GHz, and 5 GHz frequencies.

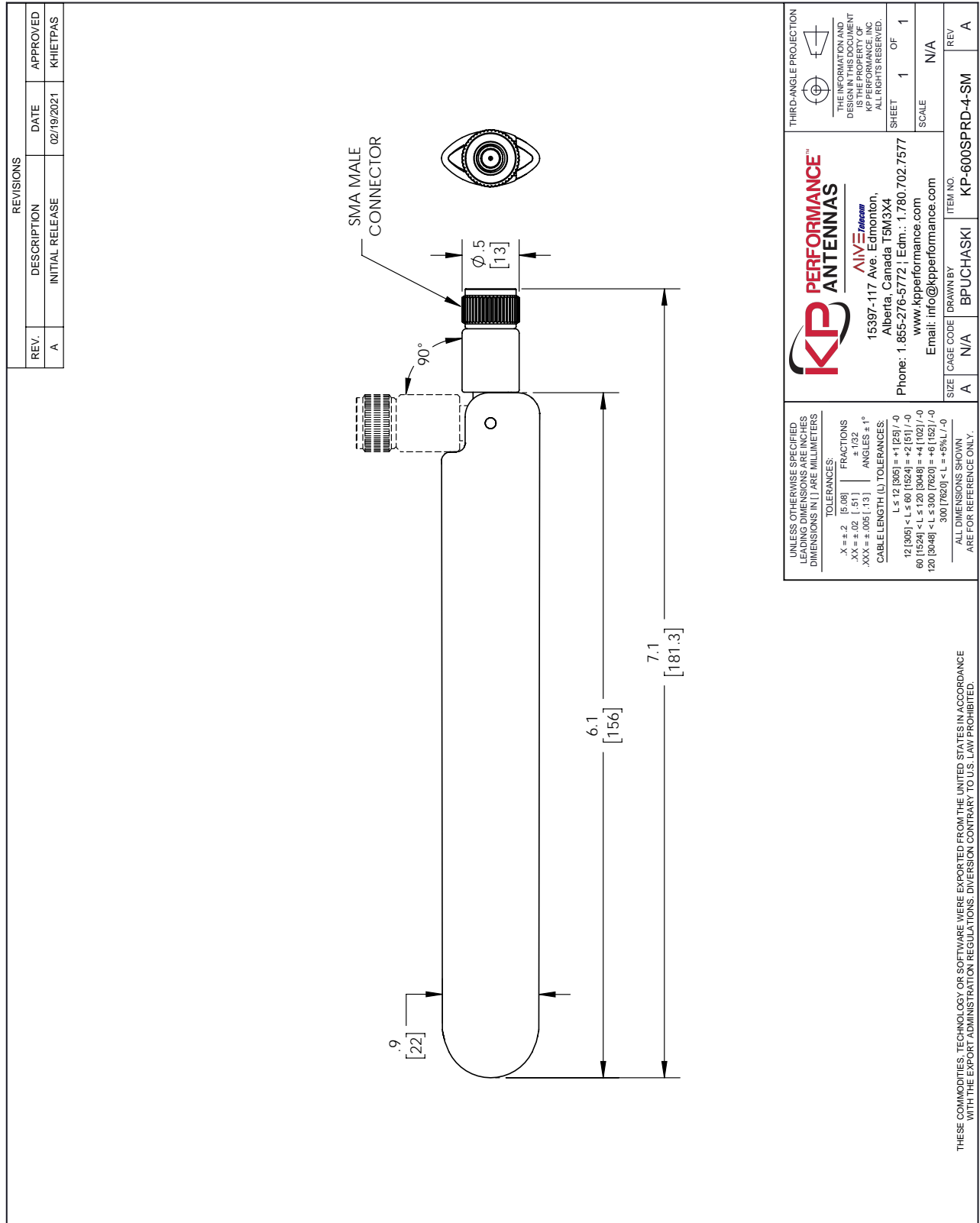
Click the following link (or enter part number in "SEARCH" on website) to obtain additional part information including price, inventory and certifications: [615 MHz-960 MHz, 1710 MHz-2700 MHz, 3300 MHz-7100 MHz 4G 5G WiFi 6e Rubber Duck, Terminal Antenna 4 dBi SMA Male Connector KP-600SPRD-4-SM](https://www.kpperformance.com/615mhz-960mhz-1710mhz-2700mhz-3300mhz-7100mhz-4g-5g-wifi-6e-rubberduck-terminal-antenna-kp-600sprd-4-sm-p.aspx)

URL: <https://www.kpperformance.com/615mhz-7125mhz-4g-5g-wifi-6e-rubberduck-terminal-antenna-kp-600sprd-4-sm-p.aspx>

The information contained within this document is accurate to the best of our knowledge and representative of the part described herein. It may be necessary to make modifications to the part and/or the documentation of the part in order to implement improvements. KP Performance reserves the right to make such changes as required. Unless otherwise stated, all specifications are nominal. KP Performance does not make any representation or warranty regarding the suitability of the part described herein for any particular purpose, and KP Performance does not assume liability arising out of the use of any part or document.

615 MHz-960 MHz, 1710 MHz-2700 MHz, 3300 MHz-7100 MHz 4G 5G WiFi  
 6e Rubber Duck, Terminal Antenna 4 dBi SMA Male Connector

**KP-600SPRD-4-SM CAD Drawing**



**KP PERFORMANCE™ ANTENNAS**  
**ALIVE Telecom**  
 15397-117 Ave. Edmonton,  
 Alberta, Canada T5M3X4  
 Phone: 1.855-276-5772 | Edm.: 1.780.702.7577  
 www.kpperformance.com  
 Email: info@kpperformance.com

UNLESS OTHERWISE SPECIFIED LEADING DIMENSIONS ARE INCHES DIMENSIONS IN [ ] ARE MILLIMETERS

TOLERANCES:  
 .X = ±.2 [5.08] FRACTIONS ± 1/32  
 .XX = ±.02 [ .51 ] ANGLES ± 1°  
 .XXX = ±.005 [ .13 ]

CABLE LENGTH (L) TOLERANCES:  
 L ≤ 12 [305] = +1 [25] / -0  
 12 [305] < L ≤ 60 [1524] = +2 [51] / -0  
 60 [1524] < L ≤ 120 [3048] = +4 [102] / -0  
 120 [3048] < L ≤ 300 [7620] = +6 [152] / -0  
 300 [7620] < L = +5% / L / -0

ALL DIMENSIONS SHOWN ARE FOR REFERENCE ONLY.

THESE COMMODITIES, TECHNOLOGY OR SOFTWARE WERE EXPORTED FROM THE UNITED STATES IN ACCORDANCE WITH THE EXPORT ADMINISTRATION REGULATIONS. DIVERSION CONTRARY TO U.S. LAW PROHIBITED.

SIZE CAGE CODE DRAWN BY  
 A N/A BPUCHASKI