



5.8 GHz, 8 dBi, Omni Antenna with N-Female Connector

Antennas Technical Data Sheet

KP-58-SPOMA-8-NF

Features

- Durable UV-Stable Fiberglass Radome For All Weather Operation
- Integral N-Female Connector
- Sealed End Cap and Drain Hole at the Base for All Weather Operation
- Antenna Mounts Included
- Can be Installed Indoors as well as Outdoors

Applications

- 5.8 GHz ISM Applications
- 5.8 GHz UNII Applications
- 5.8 GHz Wireless LAN Systems
- WiFi
- Wireless Video Systems
- Public Safety Networks

Description

The KP-58-SPOMA-8-NF is a very compact yet high performance omnidirectional WiFi antenna designed for the 5.8GHz ISM and UNII band. It is ideally suited for IEEE 802.11a, 802.11h, 802.11j, 802.11n, 802.11ac, and 802.11ax (WiFi 6) wireless LANs and multipoint and mobile applications where high gain and wide coverage is desired.

The KP-58-SPOMA-8-NF from KP Performance features a fiberglass radome for durability and aesthetics. Included with the antenna, the mounting system features a heavy-duty steel bracket and U-Bolt for superior strength. In addition to shipping the same day, our omnidirectional antennas are high-quality components backed by expert technical support and sales personnel.

Configuration

Design	Omni
Frequency Range	5.725 to 5.85 GHz
Polarization	Vertical
Connector Type	N Female
Number of Ports	1

Electrical Specifications

Description	Minimum	Typical	Maximum	Units
Impedance		50		Ohms
Gain Nominal		8		dBi
Horizontal (Azimuth) Beam Width		360		Degrees
Vertical (Elevation) Beam Width		16		Degrees
Input Power			100	Watts
VSWR			1.5:1	

Click the following link (or enter part number in "SEARCH" on website) to obtain additional part information including price, inventory and certifications: [5.8 GHz, 8 dBi, Omni Antenna with N-Female Connector KP-58-SPOMA-8-NF](#)



5.8 GHz, 8 dBi, Omni Antenna with N-Female Connector

Antennas Technical Data Sheet

KP-58-SPOMA-8-NF

Mechanical Specifications

Radome Material	Fiberglass
Size	
Radome Diameter	0.78 in [19.81 mm]
Length	13.7 in [347.98 mm]
Weight	0.44 lbs [199.58 g]
Mounting	
Mount Type	Mast
Mounting Mast Diameter	2 in [50.80 mm]
Mechanical Specification Notes:	

Environmental Specifications

Temperature	
Operating Range	-40 to +85 deg C

Compliance Certifications (see [product page](#) for current document)

Plotted and Other Data

Notes:

Dedicated to serving the needs of the Wireless Internet Service Provider (WISP) market, KP Performance Antennas offers purpose built products that reliably perform in the field. KP Performance Antennas product line consists of Yagi, Grid, Omni, Dish and other style antennas that operate in the 900 MHz, 2.4 GHz, 3 GHz, and 5 GHz frequencies.

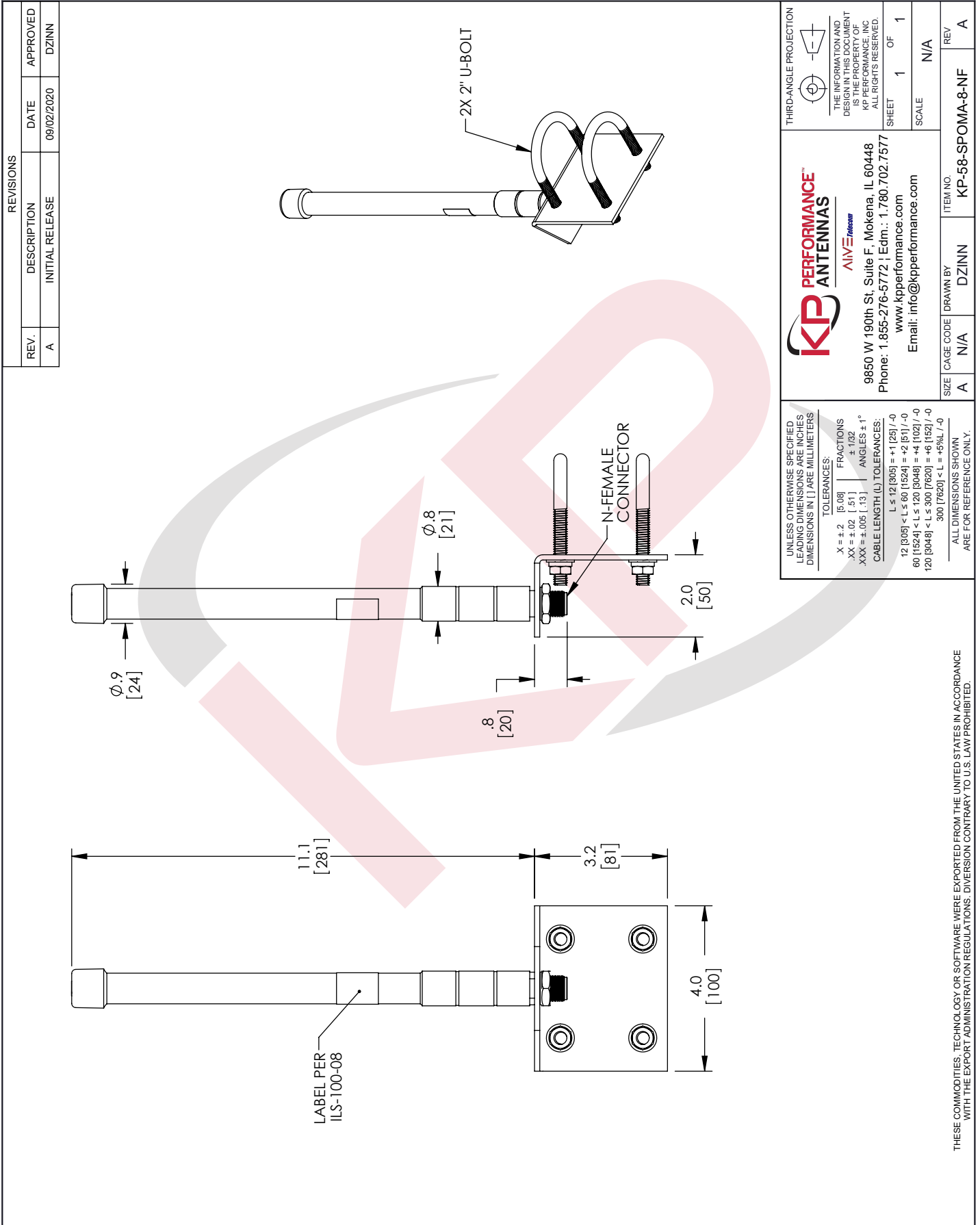
Click the following link (or enter part number in "SEARCH" on website) to obtain additional part information including price, inventory and certifications: [5.8 GHz, 8 dBi, Omni Antenna with N-Female Connector KP-58-SPOMA-8-NF](#)

URL: <https://www.kpperformance.com/5-8ghz-8dbi-omni-antenna-n-female-connector-kp-58-spoma8-nf-p.aspx>

The information contained in this document is accurate to the best of our knowledge and representative of the part described herein. It may be necessary to make modifications to the part and/or the documentation of the part, in order to implement improvements. KP Performance reserves the right to make such changes as required. Unless otherwise stated, all specifications are nominal. KP Performance does not make any representation or warranty regarding the suitability of the part described herein for any particular purpose, and KP Performance does not assume any liability arising out of the use of any part or documentation.

KP-58-SPOMA-8-NF CAD Drawing

5.8 GHz, 8 dBi, Omni Antenna with N-Female Connector



REVISIONS			
REV.	DESCRIPTION	DATE	APPROVED
A	INITIAL RELEASE	09/02/2020	DZINN

<p>THIRD-ANGLE PROJECTION</p> <p>THE INFORMATION AND DESIGN IN THIS DOCUMENT IS THE PROPERTY OF KP PERFORMANCE, INC. ALL RIGHTS RESERVED.</p>		<p>SHEET 1 OF 1</p>	
<p>SCALE N/A</p>		<p>REV A</p>	
<p>KP PERFORMANCE ANTENNAS A LIVE TELECOM COMPANY</p> <p>9850 W 190th St, Suite F, Mokena, IL 60448 Phone: 1.855-276-5772 Edm.: 1.780.702.7577 www.kpperformance.com Email: info@kpperformance.com</p>		<p>ITEM NO. KP-58-SPOMA-8-NF</p>	
<p>SIZE A</p>	<p>CAGE CODE N/A</p>	<p>DRAWN BY DZINN</p>	<p>REV A</p>

UNLESS OTHERWISE SPECIFIED LEADING DIMENSIONS ARE INCHES DIMENSIONS IN [] ARE MILLIMETERS

TOLERANCES:

X = ±.2	[5.08]	FRACTIONS	
XX = ±.02	[.51]		+1/32
XXX = ±.005	[.13]	ANGLES ± 1°	

CABLE LENGTH (L) TOLERANCES:

L ≤ 12	[305]	= +1 [25] / -0
12 [305] < L ≤ 60	[1524]	= +2 [51] / -0
60 [1524] < L ≤ 120	[3048]	= +4 [102] / -0
120 [3048] < L ≤ 300	[7620]	= +8 [152] / -0
300 [7620] < L		= +8% / -0

ALL DIMENSIONS SHOWN ARE FOR REFERENCE ONLY.

THESE COMMODITIES, TECHNOLOGY OR SOFTWARE WERE EXPORTED FROM THE UNITED STATES IN ACCORDANCE WITH THE EXPORT ADMINISTRATION REGULATIONS. DIVERSION CONTRARY TO U.S. LAW PROHIBITED.

T1Rev D