

3.3 GHz to 3.8 GHz, 10 dBi PRO Series Omni Antenna, Type N Female, Fiberglass Radome

KP-3SPOMA-10



Features

- All weather operation
- Includes heavy duty steel mast mounting brackets
- Lightweight fiberglass radome
- Integral N-Female connector
- Commercial grade design
- 360° Omnidirectional Pattern

Applications

- Point to Multipoint and Non Line of Sight (NLOS) Applications
- 10 dBi gain
- 3500 and CBRS Cellular Band Operation

Description

The 5G / LTE outdoor omnidirectional KP-3SPOMA-10 antenna from KP Performance is a high performance RF component which operates from 3300 to 3800 MHz. The KP-3SPOMA-10 antenna is ideal for 5G, LTE, applications in CBRS band. The Multi-Band design of the KP Performance KP-3SPOMA-10 antenna can be used for a wide array of cellular telecommunication wireless applications where wide coverage is desired. KP Performance KP-3SPOMA-10 can be used to distribute Cellular signals throughout an outdoor area.

The Type N connectorized KP-3SPOMA-10 antenna with vertical polarization from KP Performance provides excellent outdoor coverage for all base station applications. The Type N connectorized KP-3SPOMA-10 antenna from KP Performance excels in large open areas. The mounting bracket and hardware are included for easy installation. KP Performance 5G / LTE outdoor omnidirectional with Type N female purchases will ship the same day. Our KP-3SPOMA-10 antennas are in-stock and available for immediate shipment.

Configuration

Design	Omni
Band Type	Single
Radiation Pattern	Directional
Polarization	Vertical
Connector Type	N Female
Number of Ports	1
Lightning Protection	DC Ground

Electrical Specifications

Description	Minimum	Typical	Maximum	Units
Frequency Range	3,300		3,800	MHz
Input VSWR		2:1		
Impedance		50		Ohms
Gain			10	
Input Power			100	Watts

Mechanical Specifications

Radome Material	Fiberglass
Size	

Click the following link (or enter part number in "SEARCH" on website) to obtain additional part information including price, inventory and certifications:
[3.3 GHz to 3.8 GHz, 10 dBi PRO Series Omni Antenna, Type N Female, Fiberglass Radome KP-3SPOMA-10](#)

3.3 GHz to 3.8 GHz, 10 dBi PRO Series Omni Antenna, Type N Female, Fiberglass Radome

KP-3SPOMA-10



Length	25.5906 in [650 mm]
Width	0.787402 in [20 mm]
Height	0.787402 in [20 mm]
Mounting Mast Diameter	1.18 to 2.16 in [29.97 to 54.86 mm]
Weight	2 lbs [907.18 g]

Environmental Specifications

Temperature

Operating Range	-40 to +60 deg C
Wind Survivability	134.216 MPH [216 KPH]
Wind Loading	

Plotted and Other Data

Notes:

Appendix

Electrical Downtilt: Angle in the antenna's elevation pattern in which the maximum gain occurs.

Gain: Antenna's average gain.

Front to Back Ratio @ 180°±30°: Average difference between the antenna's maximum gain and the maximum gain in the antenna's back lobe over ±30° angles.

Cross-polarization Ratio (dB): Typical difference between the co-polarization and cross-polarization gain across the sector's 3 dB Beam Width.

Dedicated to serving the needs of the Wireless Internet Service Provider (WISP) market, KP Performance Antennas offers purpose built products that reliably perform in the field. KP Performance Antennas product line consists of Yagi, Grid, Omni, Dish and other style antennas that operate in the 900 MHz, 2.4 GHz, 3 GHz, and 5 GHz frequencies.

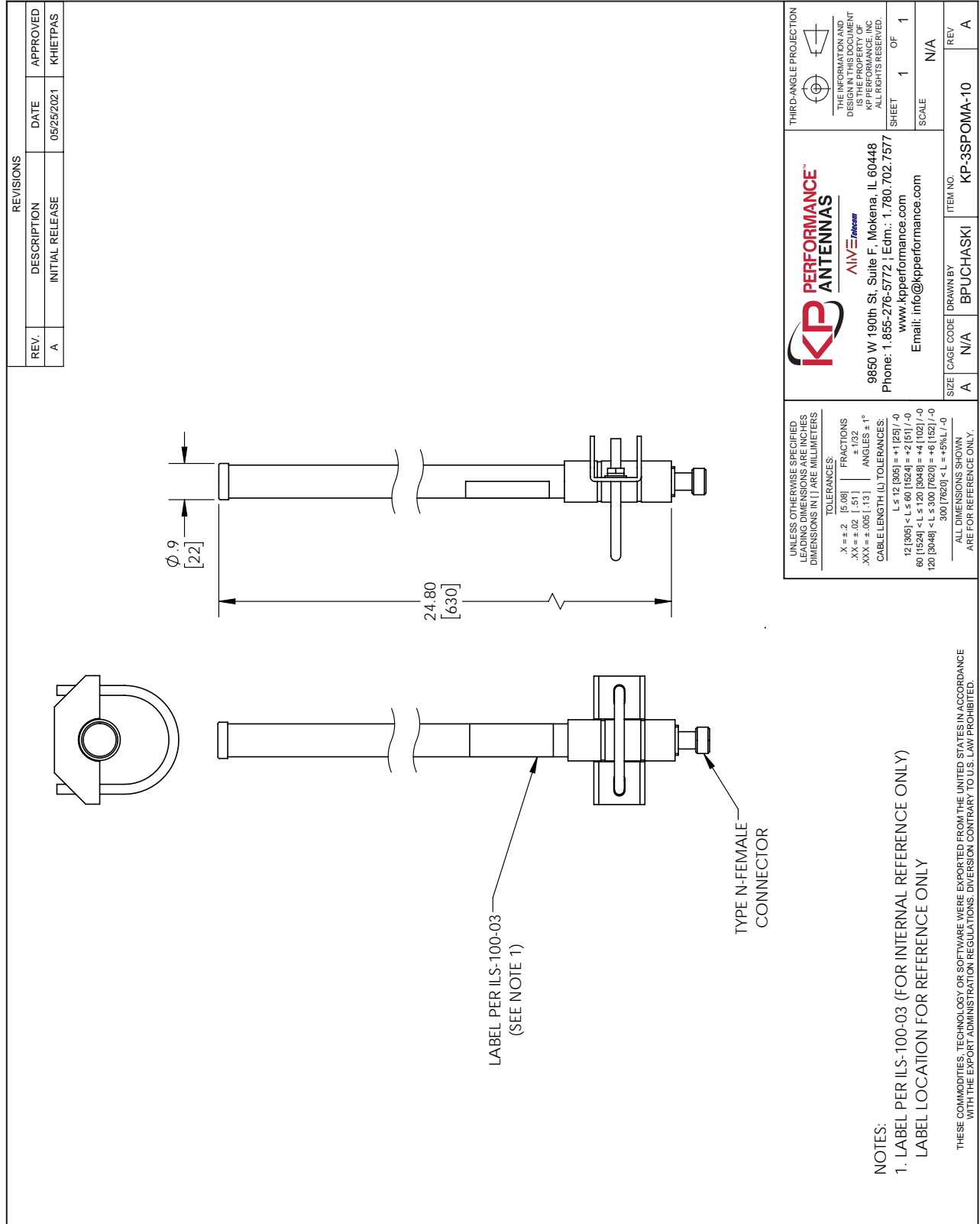
Click the following link (or enter part number in "SEARCH" on website) to obtain additional part information including price, inventory and certifications: [3.3 GHz to 3.8 GHz, 10 dBi PRO Series Omni Antenna, Type N Female, Fiberglass Radome KP-3SPOMA-10](https://www.kpperformance.com/3.3ghz-3.8ghz-10-dbi-pro-omni-antenna-type-n-female-fiberglass-kp-3spoma-10-p.aspx)

URL: <https://www.kpperformance.com/3.3ghz-3.8ghz-10-dbi-pro-omni-antenna-type-n-female-fiberglass-kp-3spoma-10-p.aspx>

The information contained within this document is accurate to the best of our knowledge and representative of the part described herein. It may be necessary to make modifications to the part and/or the documentation of the part in order to implement improvements. KP Performance reserves the right to make such changes as required. Unless otherwise stated, all specifications are nominal. KP Performance does not make any representation or warranty regarding the suitability of the part described herein for any particular purpose, and KP Performance does not assume liability arising out of the use of any part or document.

3.3 GHz to 3.8 GHz, 10 dBi PRO Series Omni Antenna, Type N Female, Fiberglass Radome

KP-3SPOMA-10 CAD Drawing



REVISIONS			
REV.	DESCRIPTION	DATE	APPROVED
A	INITIAL RELEASE	05/25/2021	KHIETPAS

KP PERFORMANCE™
ANTENNAS
 AIVE™ *telecom*

9850 W 190th St, Suite F, Mokena, IL 60448
 Phone: 1.855-276-5772 | Edm.: 1.780.702.7577
 www.kpperformance.com
 Email: info@kpperformance.com

UNLESS OTHERWISE SPECIFIED
 LEADING DIMENSIONS ARE IN INCHES
 DIMENSIONS IN [] ARE IN MILLIMETERS

TOLERANCES:
 .X = ±.2 [5.08] FRACTIONS ± 1/32
 .XX = ±.02 [.51] ANGLES ± 1°
 .XXX = ±.005 [.13]

CABLE LENGTH (L) TOLERANCES:
 L ≤ 12 [305] = ±1 [25] / -0
 12 [305] < L ≤ 60 [1524] = ±2 [51] / -0
 60 [1524] < L ≤ 120 [3048] = ±4 [102] / -0
 120 [3048] < L ≤ 300 [7620] = ±6 [152] / -0
 300 [7620] < L = +5% / L / -0

ALL DIMENSIONS SHOWN
 ARE FOR REFERENCE ONLY.

THIRD-ANGLE PROJECTION

THE INFORMATION AND
 DIMENSIONS SHOWN
 IS THE PROPERTY OF
 KP PERFORMANCE, INC
 ALL RIGHTS RESERVED.
 SHEET 1 OF 1
 SCALE N/A

SIZE	CAGE CODE	DRAWN BY	ITEM NO.
A	N/A	BPUCHASKI	KP-3SPOMA-10
			REV A

NOTES:
 1. LABEL PER ILS-100-03 (FOR INTERNAL REFERENCE ONLY)
 LABEL LOCATION FOR REFERENCE ONLY

THESE COMMODITIES, TECHNOLOGY OR SOFTWARE WERE EXPORTED FROM THE UNITED STATES IN ACCORDANCE
 WITH THE EXPORT ADMINISTRATION REGULATIONS, DIVISION CONTRARY TO U.S. LAW PROHIBITED.

T-Rev.D