



2.4 GHz, 8 dBi, Omni Antenna with 12 inch N-Female Connector

Antennas Technical Data Sheet

KP-24-SPOMA12-8-NF

Features

- 12" Coax Lead
- Includes Mounting System
- All Weather Operation
- Compact, Lightweight design
- Durable UV-Stable Fiberglass Radome

Applications

- Bluetooth® & Public Wireless Hotspot
- 2.4 GHz ISM Band
- Supports IEEE 802.11b/g/n Applications
- WiFi and 2.4 GHz Wireless Video Systems

Description

KP Performance Antenna KP-24-SPOMA12-8-NF omnidirectional antenna is a very compact yet high performance antenna designed for the 2.4GHz ISM band. It is ideally suited for multipoint and mobile applications where high gain and wide coverage is desired. This compact and lightweight antenna is ideally suited for IEEE 802.11b, 802.11g, 802.11n, and 802.11ax (WiFi 6) wireless LANs, IoT, Bluetooth, public wireless hotspot application and other multipoint applications where wide coverage is desired.

The KP Performance Antenna KP-24-SPOMA12-8-NF omnidirectional antennas construction features a fiberglass radome for durability and aesthetics. It is equipped with a 12" pigtail connectorized with an N-female. This enables it to be directly connected to a radio without a separate cable.

Its mounting system features a heavy-duty extruded aluminum bracket and stainless steel U-Bolt for superior strength. In addition to shipping the same day, our 2.4 GHz omnidirectional antennas are high-quality components backed by expert technical support and sales personnel.

Configuration

Design	Omni
Frequency Range	2.4 to 2.5 GHz
Polarization	Vertical
Cable Length	12 in [304.8 mm]
Connector Type	N Female
Number of Ports	1

Electrical Specifications

Description	Minimum	Typical	Maximum	Units
Impedance		50		Ohms
Gain Nominal		8		dBi
Horizontal (Azimuth) Beam Width		360		Degrees
Vertical (Elevation) Beam Width		18		Degrees
Input Power			100	Watts

Click the following link (or enter part number in "SEARCH" on website) to obtain additional part information including price, inventory and certifications: [2.4 GHz, 8 dBi, Omni Antenna with 12 inch N-Female Connector KP-24-SPOMA12-8-NF](#)



2.4 GHz, 8 dBi, Omni Antenna with 12 inch N-Female Connector

Antennas Technical Data Sheet

KP-24-SPOMA12-8-NF

VSWR

2:1



Mechanical Specifications

Radome Material	Fiberglass
Size	
Length	16 in [406.4 mm]
Weight	1.5 lbs [680.39 g]
Mounting	
Mount Type	Mast
Mounting Mast Diameter	2.38 in [60.45 mm]
Mechanical Specification Notes:	

Environmental Specifications

Temperature	
Operating Range	-40 to +85 deg C
Wind Survivability	100 MPH [160.93 KPH]

Compliance Certifications (see [product page](#) for current document)

Plotted and Other Data

Notes:

Dedicated to serving the needs of the Wireless Internet Service Provider (WISP) market, KP Performance Antennas offers purpose built products that reliably perform in the field. KP Performance Antennas product line consists of Yagi, Grid, Omni, Dish and other style antennas that operate in the 900 MHz, 2.4 GHz, 3 GHz, and 5 GHz frequencies.

Click the following link (or enter part number in "SEARCH" on website) to obtain additional part information including price, inventory and certifications: [2.4 GHz, 8 dBi, Omni Antenna with 12 inch N-Female Connector KP-24-SPOMA12-8-NF](#)

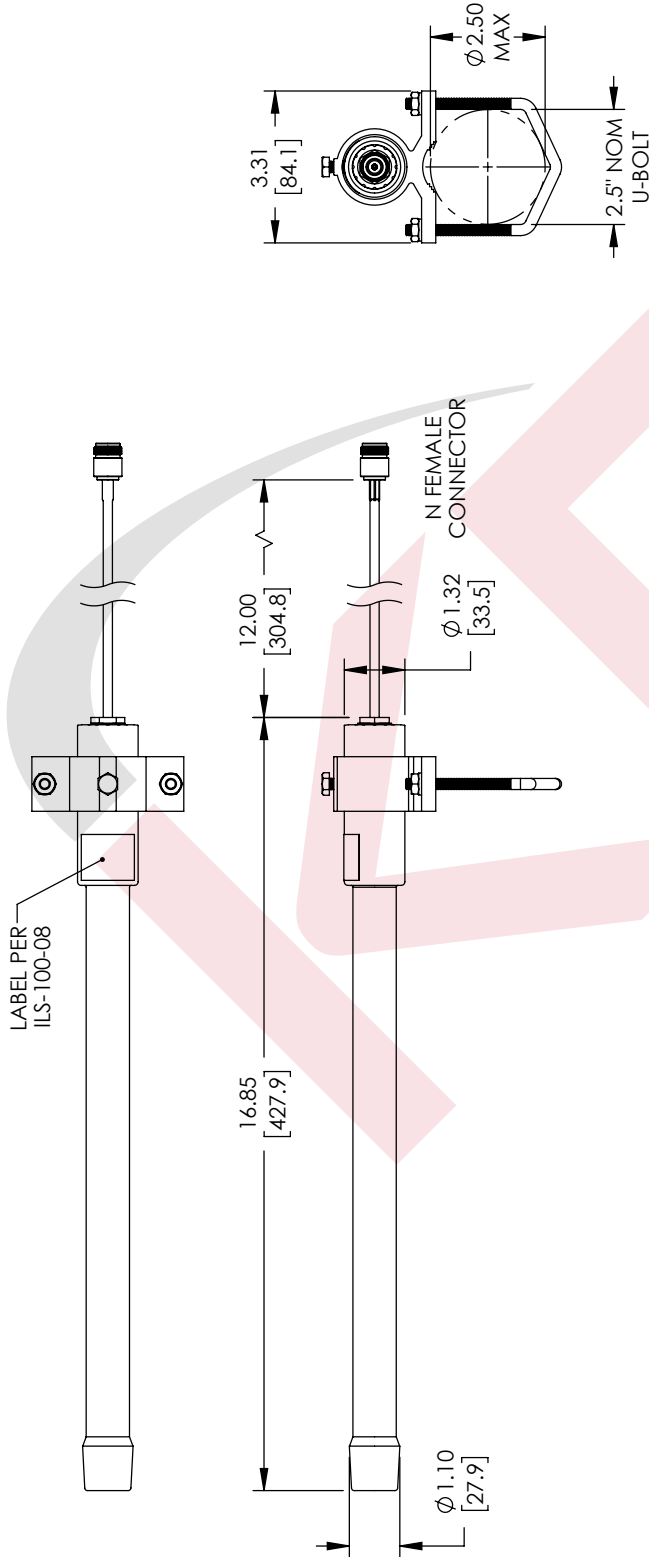
URL: <https://www.kpperformance.com/2-4ghz-8dbi-omni-antenna-12-inch-n-female-connector-kp-24-spoma-12-8-nf-p.aspx>

The information contained in this document is accurate to the best of our knowledge and representative of the part described herein. It may be necessary to make modifications to the part and/or the documentation of the part, in order to implement improvements. KP Performance reserves the right to make such changes as required. Unless otherwise stated, all specifications are nominal. KP Performance does not make any representation or warranty regarding the suitability of the part described herein for any particular purpose, and KP Performance does not assume any liability arising out of the use of any part or documentation.

KP-24-SPOMA12-8-NF CAD Drawing

2.4 GHz, 8 dBi, Omni Antenna with 12 inch N-Female Connector

REVISIONS			
REV.	DESCRIPTION	DATE	APPROVED
A	INITIAL RELEASE	09/02/2020	KH1ETPAS



<p>UNLESS OTHERWISE SPECIFIED LEADING DIMENSIONS ARE INCHES DIMENSIONS IN [] ARE MILLIMETERS</p> <p>TOLERANCES:</p> <p>X = ±.2 [5.08] FRACTIONS XX = ±.02 [51] +.132 XXX = ±.005 [13] ANGLES ± 1°</p> <p>CABLE LENGTH (L) TOLERANCES:</p> <p>L ≤ 12 [305] = +1 [25] / -0 12 [305] < L ≤ 60 [1524] = +2 [51] / -0 60 [1524] < L ≤ 120 [3048] = +4 [102] / -0 120 [3048] < L ≤ 300 [7620] = +8 [162] / -0 300 [7620] < L = +9% / -0</p> <p>ALL DIMENSIONS SHOWN ARE FOR REFERENCE ONLY.</p>	<p>PERFORMANCE ANTENNAS <small>ALIVE Telecom</small></p> <p>9850 W 190th St, Suite F, Mokena, IL 60448 Phone: 1.855-276-5772 Edm.: 1.780.702.7577 www.kpperformance.com Email: info@kpperformance.com</p>	<p>THIRD-ANGLE PROJECTION</p> <p>THE INFORMATION AND DESIGN IN THIS DOCUMENT IS THE PROPERTY OF KP PERFORMANCE, INC. ALL RIGHTS RESERVED.</p> <p>SHEET 1 OF 1</p> <p>SCALE N/A</p>	<table border="1" style="width: 100%; border-collapse: collapse;"> <tr> <td style="width: 10%;">SIZE</td> <td style="width: 10%;">CAGE CODE</td> <td style="width: 10%;">DRAWN BY</td> <td style="width: 10%;">ITEM NO.</td> <td style="width: 10%;">REV</td> </tr> <tr> <td style="text-align: center;">A</td> <td style="text-align: center;">N/A</td> <td style="text-align: center;">DZINN</td> <td style="text-align: center;">KP-24-SPOMA12-8-NF</td> <td style="text-align: center;">A</td> </tr> </table>	SIZE	CAGE CODE	DRAWN BY	ITEM NO.	REV	A	N/A	DZINN	KP-24-SPOMA12-8-NF	A
SIZE	CAGE CODE	DRAWN BY	ITEM NO.	REV									
A	N/A	DZINN	KP-24-SPOMA12-8-NF	A									

THESE COMMODITIES, TECHNOLOGY OR SOFTWARE WERE EXPORTED FROM THE UNITED STATES IN ACCORDANCE WITH THE EXPORT ADMINISTRATION REGULATIONS. DIVERSION CONTRARY TO U.S. LAW PROHIBITED.

T1Rev D