

2.4 GHz to 2.5 GHz + 3.45 GHz to 3.8 GHz,  
15 to 18 dBi gain, 4x4 MIMO Flat Panel Antenna, X-pol  
Dual Band, 4 x N Female Connectors

**KP-23X4FP-18**



**Features**

- 2.4 GHz to 2.5 GHz / 3.45 GHz to 3.8 GHz
- 15.5 / 18 dBi High Gain
- Low Profile Design
- +/- 45 slant polarization for increased MIMO and data throughput
- Outdoor rated
- 4 x Type N connector

**Applications**

- WISP
- WLAN
- CBRS
- High Density WIFI Applications
- Hospitality, Industrial, Municipality
- LTE
- Rural High Speed Internet

**Description**

The KP-23X4FP-18 from KP Performance is Flat Panel dual band antenna, operating from 2.4 GHz to 2.5 GHz and 3.45 GHz to 3.8 GHz. It is a professional quality antenna designed primarily for multiple input multiple output, point-to-multipoint and point-to-point applications in the 2.4 GHz and the 3.5 GHz frequency bands.

This KP Performance antenna has 30 to 44 degrees of Horizontal and 18 to 22 degrees of Vertical Beamwidth. KP-23X4FP-18 incorporates advanced Cross Polarization technology that allows for the interoperability of multiple radios to transmit and receive paths. With high 15.5 / 18 dBi gain, a heavy-duty ABS plastic radome this X-pol Flat Panel antenna is ideal for high density outdoor applications. The KP-23X4FP-18 antenna is designed for pole mounting and is DC Grounded.

The KP-23X4FP-18 features four separate antenna ports 2x2 MIMO or 4x4 MIMO, with N Type Female connectors and a minimum of 20 dB Port to Port Isolation. A mast mount is included which allows for quick installation at various degrees of up/down tilt for easy alignment. Contact the KP Performance friendly and knowledgeable staff for your answers on any of our antennas.

**Configuration**

Design	Panel
Band Type	Dual
Radiation Pattern	Directional
Polarization	±45 Deg. Slant
Connector Type	N Female
Number of Ports	4
Lightning Protection	DC Ground

**Electrical Specifications**

Description	Minimum	Typical	Maximum	Units
Frequency Range	2,400		3,800	MHz
Input VSWR			2:1	
Impedance		50		Ohms
Input Power			50	Watts

Click the following link (or enter part number in "SEARCH" on website) to obtain additional part information including price, inventory and certifications: [2.4 GHz to 2.5 GHz + 3.45 GHz to 3.8 GHz, 15 to 18 dBi gain, 4x4 MIMO Flat Panel Antenna, X-pol Dual Band, 4 x N Female Connectors KP-](#)

2.4 GHz to 2.5 GHz + 3.45 GHz to 3.8 GHz,  
15 to 18 dBi gain, 4x4 MIMO Flat Panel Antenna, X-pol  
Dual Band, 4 x N Female Connectors



**KP-23X4FP-18**

**Specifications by Band**

Description	Band 1	Band 2	Band 3	Band 4	Band 5	Units
Range	2.4 to 2.5	3.45 to 3.8				GHz
Gain	15.5	18				dBi
Horizontal HPBW	44	30				Degrees
Vertical HPBW	22	18				Degrees
Port to Port Isolation	20	20				dB
Front to Back Ratio	25	25				dB
VSWR Max	2:1	2:1				

**Mechanical Specifications**

Radome Material	ABS
Housing Plating/Color	White
<b>Size</b>	
Length	17.52 in [445.01 mm]
Width	17.52 in [445.01 mm]
Height	1.38 in [35.05 mm]
Mounting Mast Diameter	1.38 to 1.97 in [35.05 to 50.04 mm]
Weight	10 lbs [4.54 kg]

**Environmental Specifications**

<b>Temperature</b>	
Operating Range	-40 to +60 deg C

**Plotted and Other Data**

Notes:

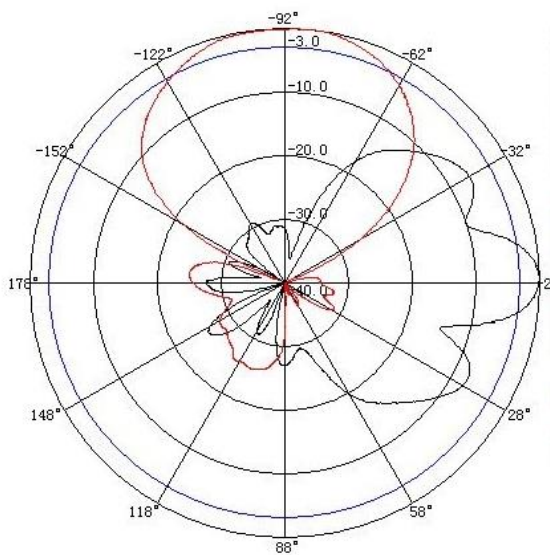
Click the following link (or enter part number in "SEARCH" on website) to obtain additional part information including price, inventory and certifications: [2.4 GHz to 2.5 GHz + 3.45 GHz to 3.8 GHz, 15 to 18 dBi gain, 4x4 MIMO Flat Panel Antenna, X-pol Dual Band, 4 x N Female Connectors KP-](#)

2.4 GHz to 2.5 GHz + 3.45 GHz to 3.8 GHz,  
15 to 18 dBi gain, 4x4 MIMO Flat Panel Antenna, X-pol  
Dual Band, 4 x N Female Connectors

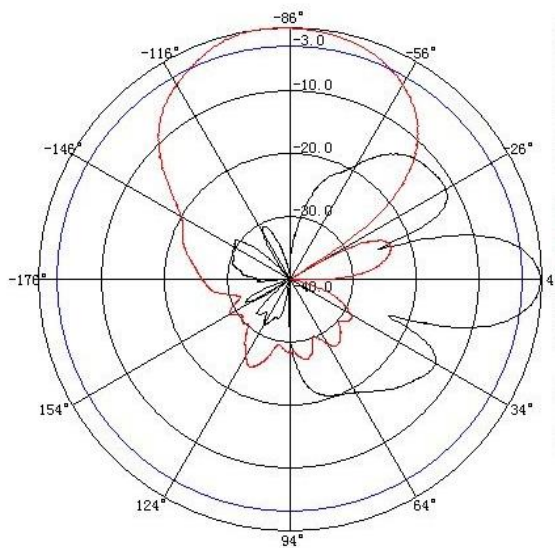
**KP-23X4FP-18**



**Typical Radiation Pattern**



Test Frequency: 2400MHz  
Test Plane: Vertical  
Test Plane : Horizontal

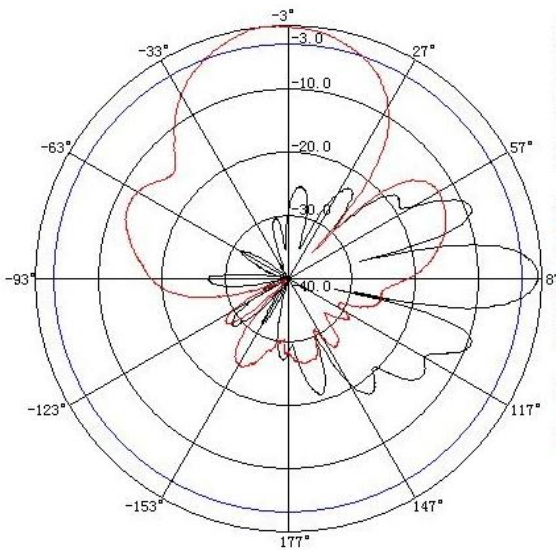


Test Frequency: 2500MHz  
Test Plane: Vertical  
Test Plane : Horizontal

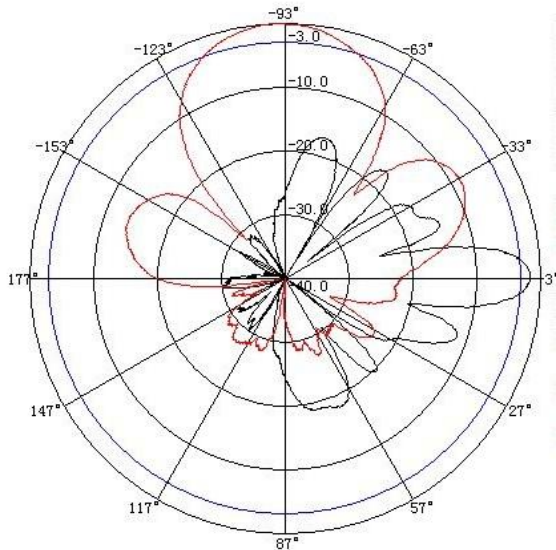
Click the following link (or enter part number in "SEARCH" on website) to obtain additional part information including price, inventory and certifications: [2.4 GHz to 2.5 GHz + 3.45 GHz to 3.8 GHz, 15 to 18 dBi gain, 4x4 MIMO Flat Panel Antenna, X-pol Dual Band, 4 x N Female Connectors KP-](#)

2.4 GHz to 2.5 GHz + 3.45 GHz to 3.8 GHz,  
15 to 18 dBi gain, 4x4 MIMO Flat Panel Antenna, X-pol  
Dual Band, 4 x N Female Connectors

**KP-23X4FP-18**



Test Frequency: 3600MHz  
Test Plane: Vertical  
Test Plane : Horizontal



Test Frequency: 3800MHz  
Test Plane: Vertical  
Test Plane : Horizontal

Click the following link (or enter part number in "SEARCH" on website) to obtain additional part information including price, inventory and certifications: 2.4 GHz to 2.5 GHz + 3.45 GHz to 3.8 GHz, 15 to 18 dBi gain, 4x4 MIMO Flat Panel Antenna, X-pol Dual Band, 4 x N Female Connectors KP-

2.4 GHz to 2.5 GHz + 3.45 GHz to 3.8 GHz,  
15 to 18 dBi gain, 4x4 MIMO Flat Panel Antenna, X-pol  
Dual Band, 4 x N Female Connectors

**KP-23X4FP-18**



---

**Appendix**

**Electrical Downtilt:** Angle in the antenna's elevation pattern in which the maximum gain occurs.

**Gain:** Antenna's average gain.

**Front to Back Ratio @ 180°±30°:** Average difference between the antenna's maximum gain and the maximum gain in the antenna's back lobe over ±30° angles.

**Cross-polarization Ratio (dB):** Typical difference between the co-polarization and cross-polarization gain across the sector's 3 dB Beam Width.

Dedicated to serving the needs of the Wireless Internet Service Provider (WISP) market, KP Performance Antennas offers purpose built products that reliably perform in the field. KP Performance Antennas product line consists of Yagi, Grid, Omni, Dish and other style antennas that operate in the 900 MHz, 2.4 GHz, 3 GHz, and 5 GHz frequencies.

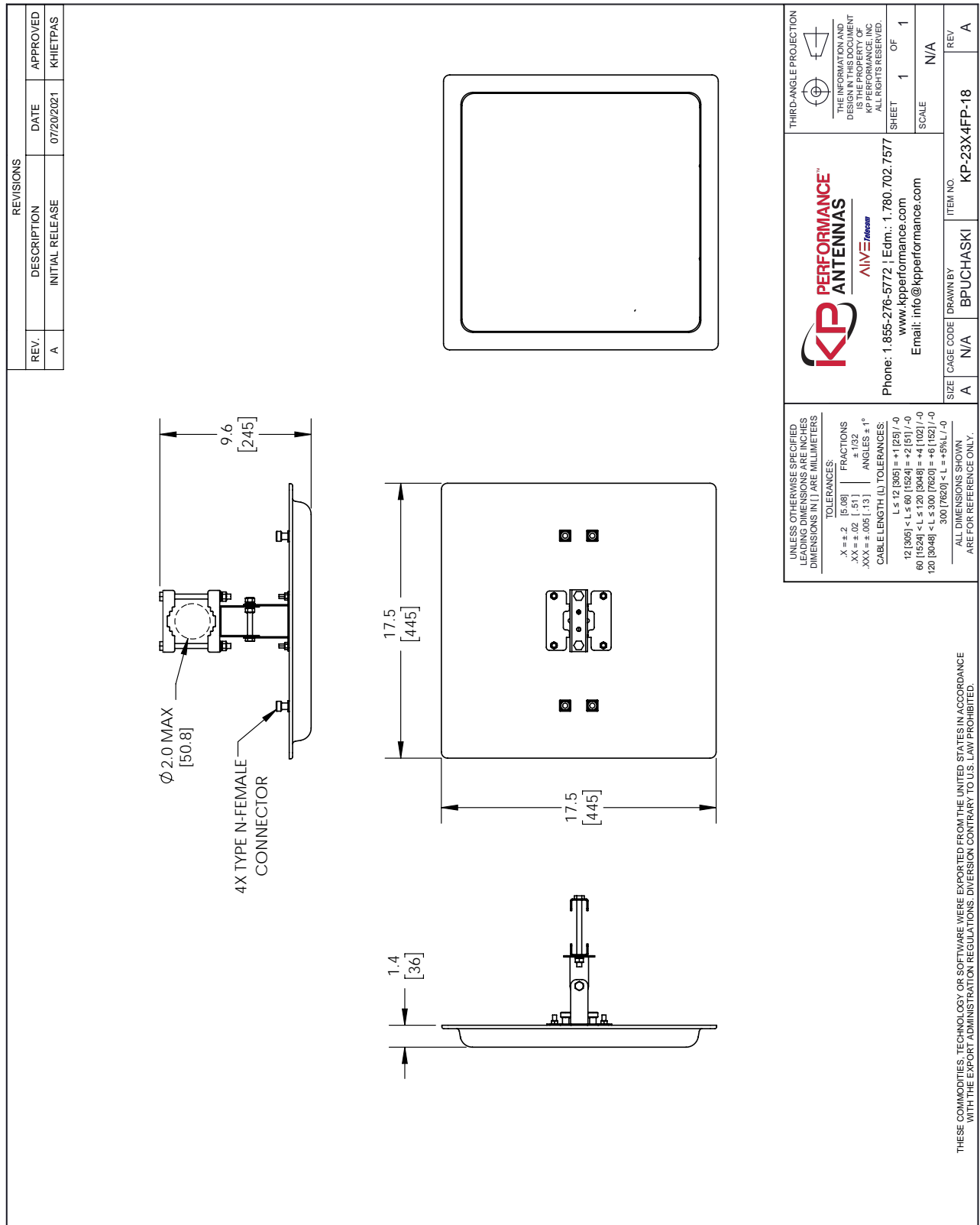
Click the following link (or enter part number in "SEARCH" on website) to obtain additional part information including price, inventory and certifications: [2.4 GHz to 2.5 GHz + 3.45 GHz to 3.8 GHz, 15 to 18 dBi gain, 4x4 MIMO Flat Panel Antenna, X-pol Dual Band, 4 x N Female Connectors KP-23X4FP-18](https://www.kpperformance.com/2.4-2.5ghz-3.45-3.8-ghz-18-dbi-mimo-flat-panel-xpol-n-female-kp-23x4fp-18-p.aspx)

URL: <https://www.kpperformance.com/2.4-2.5ghz-3.45-3.8-ghz-18-dbi-mimo-flat-panel-xpol-n-female-kp-23x4fp-18-p.aspx>

The information contained within this document is accurate to the best of our knowledge and representative of the part described herein. It may be necessary to make modifications to the part and/or the documentation of the part in order to implement improvements. KP Performance reserves the right to make such changes as required. Unless otherwise stated, all specifications are nominal. KP Performance does not make any representation or warranty regarding the suitability of the part described herein for any particular purpose, and KP Performance does not assume liability arising out of the use of any part or document.

2.4 GHz to 2.5 GHz + 3.45 GHz to 3.8 GHz, 15 to 18 dBi gain, 4x4 MIMO  
 Flat Panel Antenna, X-pol Dual Band, 4 x N Female Connectors

**KP-23X4FP-18 CAD Drawing**



PHONE: 1.855-276-5772 | Edm.: 1.780.702.7577  
 WWW.KPPERFORMANCE.COM  
 EMAIL: info@kpperformance.com

THIRD-ANGLE PROJECTION  
 THE INFORMATION AND DIMENSIONS SHOWN HEREIN ARE THE PROPERTY OF KP PERFORMANCE, INC. ALL RIGHTS RESERVED.  
 SHEET 1 OF 1  
 SCALE N/A

SIZE	CAGE CODE	DRAWN BY	ITEM NO.	REV
A	N/A	BPUCHASKI	KP-23X4FP-18	A