

2 Folded Dipole Antenna, 7.6 dBi Gain,
138-174 MHz, 1/4 Wave Offset Pattern, Type N Female,
V-pol, 35 Vertical HBPW, 210 Horizontal HBPW

KP-138SPED-8-NF



Features

- Frequency coverage for 138 MHz to 174 MHz with Type N Female connector
- Very High Gain 7.6 dBi / 5.45 dBd antennas
- Easy and quick time to installations
- Industrially tuned dipoles made of high-grade aluminum alloys
- 2-Folded dipole antenna has offset pattern with 1/4 wave spacing
- 210° horizontal beamwidth, and 35° vertical beamwidth with Vertical Polarization
- 100 W max input power

Applications

- Outdoor point-to-point (PtP) or point-to-multipoint (PtMP) applications
- VHF radio applications supported with Trunking for two-way radio communications
- Wireless LAN systems, IOT and IIOT low data high coverage applications
- TV Broadcasts and FM radio applications
- Air traffic controllers / Public Safety / Emergency services / Marine communications
- Tetra and P-25 Applications exclusively supported
- Land Mobile Radio (LMR) and Private Mobile Radio (PMR)

Description

The KP-138SPED-8-NF from KP Performance Antennas is a high-performance, two element exposed folded dipole antenna specifically designed to aesthetically pleasing design. The KP-138SPED-8-NF operate from 138 to 174 MHz for VHF applications like boosting radar, GPR/WPR, FM Radio, TV broadcasts, public safety, LMR / PMR and aviation where directivity and coverage are very important. The KP Performance Antennas KP-138SPED-8-NF has 7.6 dBi / 5.45 dBd of high gain which is ideal for these applications.

The KP Performance Antennas KP-138SPED-8-NF has Vertical polarization, 210 horizontal beamwidth, and 35 vertical beamwidth with 100W maximum power handling capability. The KP-138SPED-8-NF exposed dipole antennas are robust, outdoor, weatherproof, and high velocity wind sustainable antennas made up of high-grade aluminum alloys for longevity and resistant to corrosion. These exposed dipoles are already tuned to be Quarter wavelength away from the mast and do not require any further field adjustments. This premium 2-bay antenna has offset pattern are side mounted 1/4 wave spacing from the mast, has a pigtail terminated with 1 Type N female connector.

KP Performance KP-138SPED-8-NF Quarter wave exposed, two element folded dipole antenna operates in VHF bands with a 7.6 dBi/ 5.45 dBd. This 138 to 174 MHz antenna comes with a central support mast which is precisely designed for tight fit dipole attachments for ease transportation and error free installations. This Quarter wave KP-138SPED-8-NF comes with Type N connector is in stock and ready to ship the same day. Our expert technical support and friendly, knowledgeable customer service personnel are available to assist you with your particular needs for high performance Log Periodic antenna engineered for superior performance antennas.

Configuration

| | |
|-------------------|-------------|
| Band Type | Single |
| Radiation Pattern | Directional |
| Polarization | Vertical |
| Connector Type | N Female |
| Number of Ports | 1 |

Electrical Specifications

| Description | Minimum | Typical | Maximum | Units |
|-----------------|---------|---------|---------|-------|
| Frequency Range | 138 | | 174 | MHz |
| Input VSWR | | | 1.8:1 | |

Click the following link (or enter part number in "SEARCH" on website) to obtain additional part information including price, inventory and certifications:
[2 Folded Dipole Antenna, 7.6 dBi Gain, 138-174 MHz, 1/4 Wave Offset Pattern, Type N Female, V-pol, 35 Vertical HBPW, 210 Horizontal HBPW KP-](#)

2 Folded Dipole Antenna, 7.6 dbi Gain,
138-174 MHz, 1/4 Wave Offset Pattern, Type N Female,
V-pol, 35 Vertical HBPW, 210 Horizontal HBPW

KP-138SPED-8-NF



| | | |
|---------------------------|-----|---------|
| Gain | 7.6 | |
| Horizontal (Azimuth) HBPW | 210 | Degrees |
| Vertical (Elevation) HBPW | 35 | Degrees |
| Input Power | 100 | Watts |

Mechanical Specifications

| | |
|------------------------|---|
| Radome Material | Aluminum Alloy |
| Size | |
| Length | 118.1 in [299.97 cm] |
| Width | 27.2 in [690.88 mm] |
| Height | 2.4 in [60.96 mm] |
| Mounting Mast Diameter | 1.5748 to 1.9685 in [40.00 to 50.00 mm] |
| Weight | 23.98 lbs [10.88 kg] |

Environmental Specifications

| | |
|--------------------|-----------------------|
| Wind Survivability | 124.274 MPH [200 KPH] |
| Wind Loading | |
| Humidity | 5 to 95 |

Plotted and Other Data

Notes:

Click the following link (or enter part number in "SEARCH" on website) to obtain additional part information including price, inventory and certifications:
[2 Folded Dipole Antenna, 7.6 dbi Gain, 138-174 MHz, 1/4 Wave Offset Pattern, Type N Female, V-pol, 35 Vertical HBPW, 210 Horizontal HBPW KP-](#)

2 Folded Dipole Antenna, 7.6 dBi Gain,
138-174 MHz, 1/4 Wave Offset Pattern, Type N Female,
V-pol, 35 Vertical HBPW, 210 Horizontal HBPW

KP-138SPED-8-NF



Appendix

Electrical Downtilt: Angle in the antenna's elevation pattern in which the maximum gain occurs.

Gain: Antenna's average gain.

Front to Back Ratio @ 180°±30°: Average difference between the antenna's maximum gain and the maximum gain in the antenna's back lobe over ±30° angles.

Cross-polarization Ratio (dB): Typical difference between the co-polarization and cross-polarization gain across the sector's 3 dB Beam Width.

Dedicated to serving the needs of the Wireless Internet Service Provider (WISP) market, KP Performance Antennas offers purpose built products that reliably perform in the field. KP Performance Antennas product line consists of Yagi, Grid, Omni, Dish and other style antennas that operate in the 900 MHz, 2.4 GHz, 3 GHz, and 5 GHz frequencies.

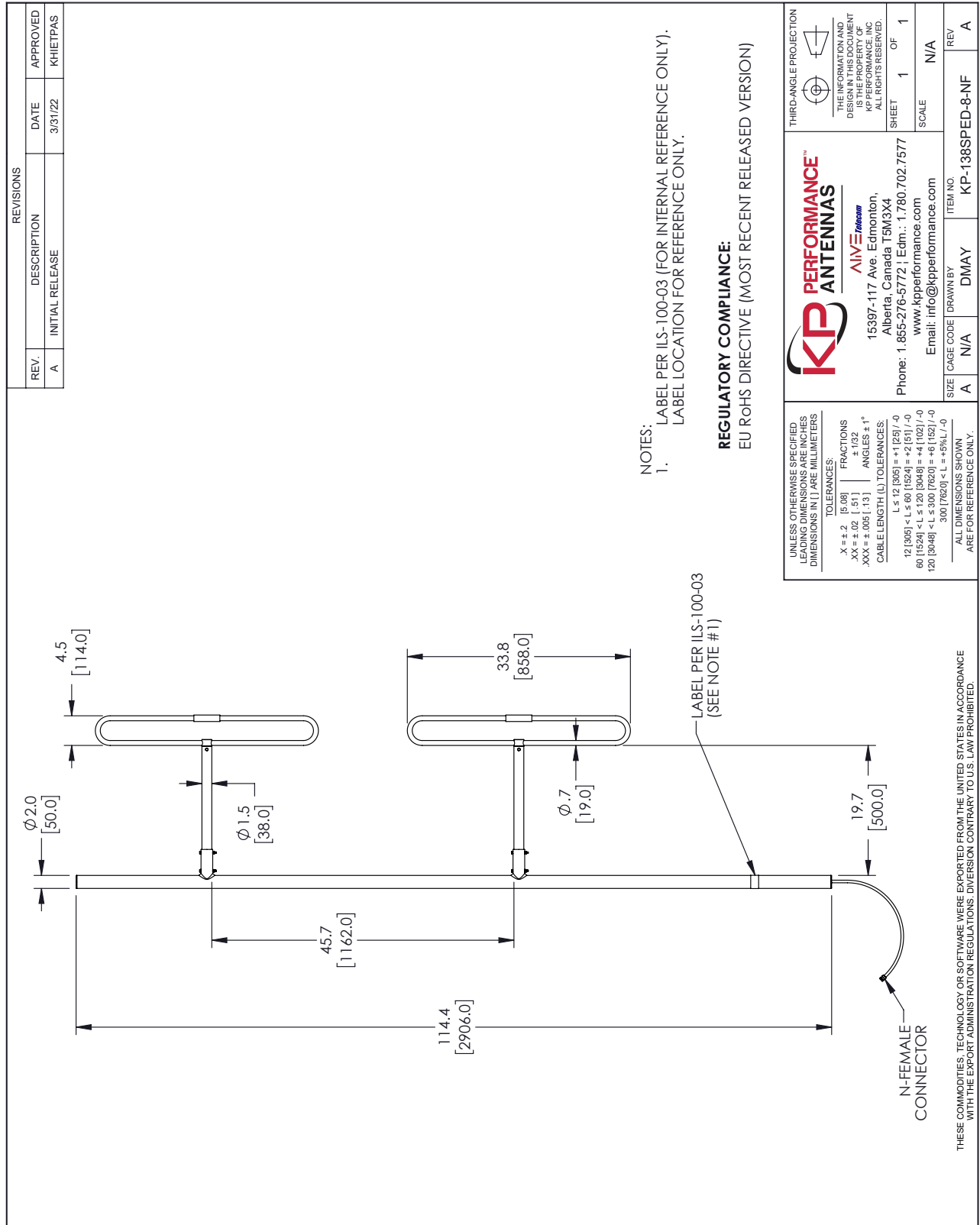
Click the following link (or enter part number in "SEARCH" on website) to obtain additional part information including price, inventory and certifications: [2 Folded Dipole Antenna, 7.6 dBi Gain, 138-174 MHz, 1/4 Wave Offset Pattern, Type N Female, V-pol, 35 Vertical HBPW, 210 Horizontal HBPW KP-138SPED-8-NF](https://www.kpperformance.com/2-folded-dipole-antenna-7-dbi-gain-138-174-mhz-1-2-wave-bidirectional-pattern-type-n-female-v-pol-35-vertical-hbpw-kp-138sped-8-nf)

URL: <https://www.kpperformance.com/2-folded-dipole-antenna-7-dbi-gain-138-174-mhz-1-2-wave-bidirectional-pattern-type-n-female-v-pol-35-vertical-hbpw-kp-138sped-8-nf-p.aspx>

The information contained within this document is accurate to the best of our knowledge and representative of the part described herein. It may be necessary to make modifications to the part and/or the documentation of the part in order to implement improvements. KP Performance reserves the right to make such changes as required. Unless otherwise stated, all specifications are nominal. KP Performance does not make any representation or warranty regarding the suitability of the part described herein for any particular purpose, and KP Performance does not assume liability arising out of the use of any part or document.

2 Folded Dipole Antenna, 7.6 dBi Gain, 138-174 MHz, 1/4 Wave Offset Pattern, Type N Female, V-pol, 35 Vertical HBPW, 210 Horizontal HBPW

KP-138SPED-8-NF CAD Drawing



NOTES:
 1. LABEL PER ILS-100-03 (FOR INTERNAL REFERENCE ONLY).
 LABEL LOCATION FOR REFERENCE ONLY.

REGULATORY COMPLIANCE:
 EU ROHS DIRECTIVE (MOST RECENT RELEASED VERSION)

| REVISIONS | | | |
|-----------|-----------------|---------|----------|
| REV. | DESCRIPTION | DATE | APPROVED |
| A | INITIAL RELEASE | 3/31/22 | KHIETPAS |

| | |
|--|---|
| <p>KP PERFORMANCE™ AIVE Telecom 15397-117 Ave. Edmonton, Alberta, Canada T5M3X4 Phone: 1.855-276-5772 Edm.: 1.780.702.7577 www.kpperformance.com Email: info@kpperformance.com</p> | <p>THIRD-ANGLE PROJECTION</p> |
| | <p>THE INFORMATION AND DIMENSIONS SHOWN ARE THE PROPERTY OF KP PERFORMANCE, INC. ALL RIGHTS RESERVED.</p> <p>SHEET 1 OF 1</p> |
| <p>UNLESS OTHERWISE SPECIFIED LEADING DIMENSIONS ARE IN INCHES DIMENSIONS IN [] ARE MILLIMETERS</p> <p>TOLERANCES: .X = ±.2 [5.08] FRACTIONS ±.132 .XX = ±.02 [.51] ANGLES ±.1° .XXX = ±.005 [.13]</p> <p>CABLE LENGTH (L) TOLERANCES: L ≤ 12 [305] = ±.1 [2.5] / -0 12 [305] < L ≤ 60 [1524] = ±.2 [5.1] / -0 60 [1524] < L ≤ 120 [3048] = ±.4 [10.2] / -0 120 [3048] < L ≤ 300 [7620] = ±.6 [15.2] / -0 300 [7620] < L = +5% / L / -0</p> | <p>SCALE N/A</p> |
| <p>ALL DIMENSIONS SHOWN ARE FOR REFERENCE ONLY.</p> | <p>ITEM NO. KP-138SPED-8-NF</p> |
| <p>SIZE A</p> | <p>DRAWN BY DMAY</p> |
| <p>REVISION A</p> | <p>REV A</p> |

THESE COMMODITIES, TECHNOLOGY OR SOFTWARE WERE EXPORTED FROM THE UNITED STATES IN ACCORDANCE WITH THE EXPORT ADMINISTRATION REGULATIONS. DIVERSION CONTRARY TO U.S. LAW PROHIBITED.

T-Rev D